

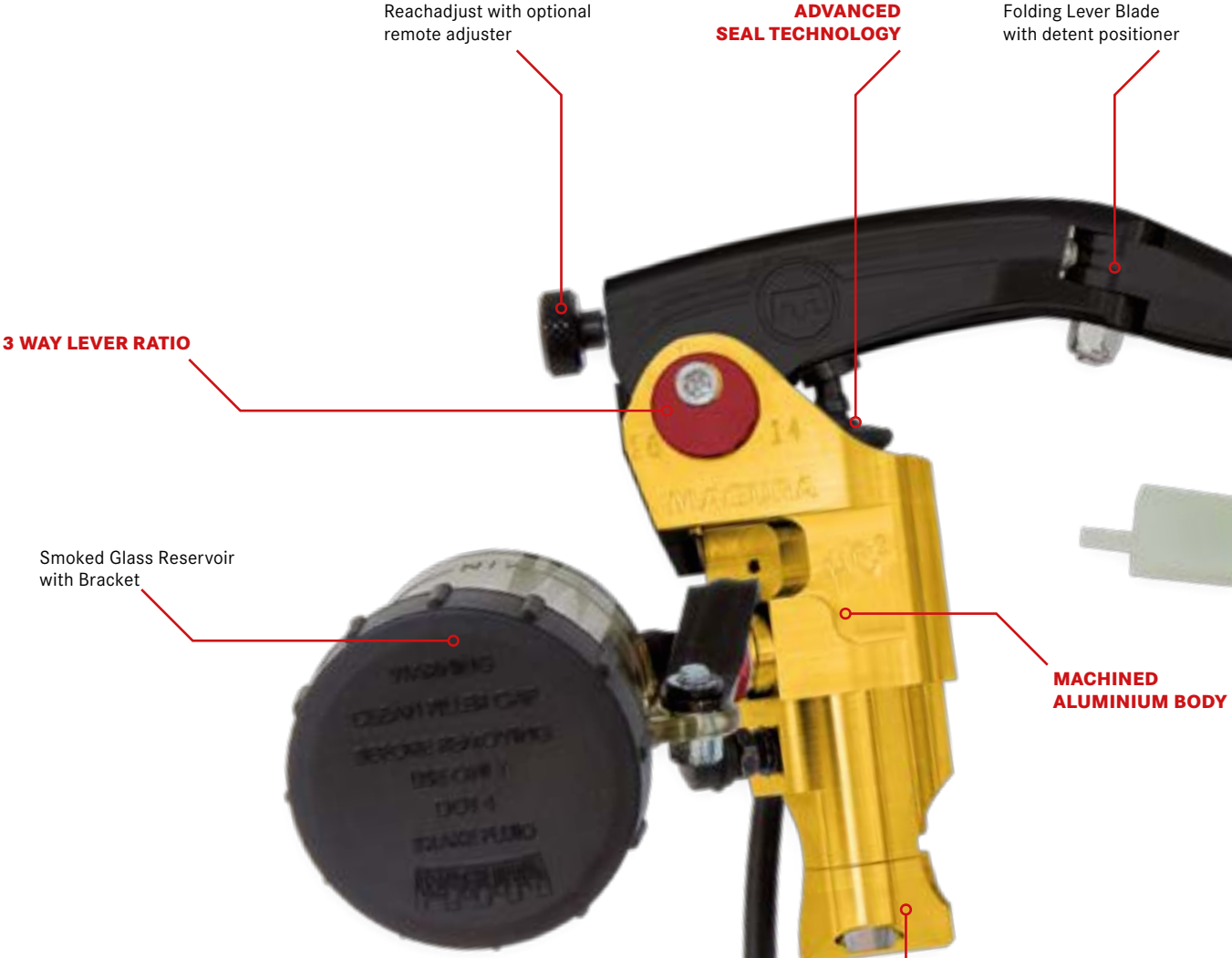
# NEW!

# HCT 3

HCT – HARD CORE TECHNOLOGY – THE NEW PATENTED TECHNOLOGY FROM MAGURA IMPROVES THE FEEDBACK FROM YOUR BRAKE SYSTEM. ORIGINALLY DESIGNED FOR THE RACE TRACK THE BENEFITS ARE JUST AS RELEVANT FOR PROFESSIONAL AND HOBBY RIDERS ALIKE. THE REDUCED INTERNAL FRICTION WILL OFFER A CONNECTED FEEL WHICH IMPROVES THE PERFORMANCE OF YOUR BRAKES. THE HCT HYDRAULIC MASTER UTILISES A SLOTTED PISTON AND A STATIONARY PRIMARY PISTON SEAL AND IS APPROVED FOR USE WITH ALL HYDRAULIC MOTOR-CYCLE BRAKING SYSTEMS WITH OR WITHOUT ABS. MAGURA HCT IS THE LATEST ADDITION TO OUR AGE OLD DESIRE FOR IMPROVEMENTS IN COMFORT, SAFETY AND RIDING PLEASURE.

## POWERED WITH





**Brake Master HC<sup>3</sup>**

ORDER CODE	MODEL
2100299	Brake Master HC <sup>3</sup> – Piston diameter 18 mm = 17 to 19 mm (fully ABE approved)
2100297	Brake Master HC <sup>3</sup> – Piston diameter 15 mm = 14 to 16 mm (fully ABE approved)
2100298	Brake Master HC <sup>3</sup> – Piston diameter 12 mm = 11 to 13 mm short lever

**Clutch Master HC<sup>3</sup>**

ORDER CODE	MODEL
2100300	Clutch Master HC <sup>3</sup> – Piston diameter 15 mm = 14 to 16 mm (for brake fluid use - DOT)
2100301	Clutch Master HC <sup>3</sup> – Piston diameter 12 mm = 11 to 13 mm (for mineral oil use*)

*\* Suitable for use with BMW and KTM mineral oil clutch activation systems  
Suitable for use with MAGURA Hymec applications*



Lightweight CNC lever

## HC<sup>3</sup> FEATURES

**Machined aluminium body** – this master cylinder body has been produced from high grade aluminium alloy to ensure a lightweight design combined with maximum rigidity which has been built to last.

**90° Full Radial Design** – Pushrod and cylinder at right angle to handlebar results in decreased friction and more direct brake feeling for improved control.

**MAGURA Hard Core Technology (HCT)** – The fully patented braking technology from MAGURA reduces the internal friction within the master cylinder to improve the feeling at the lever. The slotted piston technology reproduces a multi primary port master to ensure faster pressure balance in the event of an “ABS-Kickback”.

**Full ABS Compatibility** – MAGURA “HCT” is approved for continuous use with all ABS systems without loss of performance due to pressure compensation (ABS-Kickback). (Status 2014)

**3 Way Lever Ratio** – The hand activated master cylinder lever has a clever 3 way adjustable point of support. This mimics the effect of using a piston size 1 mm below and above the selected hydraulic ratio. Simply remove and reposition the lever support retaining bolt for a softer or harder pressure point.

**Folding Lever Blade** – Reduces the force exerted on the master cylinder body in the event of a fall over. This will increase the possibility to continue riding following a fall over incident.

**Advanced Secondary Seal Technology** – The rear piston seal has been specially designed to prevent the introduction of air through secondary seal ingress. The advanced X-Ring seal design will reduce or eliminate this problem common on racing motorcycles at higher RPM.

**Reservoir Mount** – The master cylinder is supplied with an external reservoir and mounting bracket designed to use minimum space and with smoked glass to optically determine the level and condition of the brake fluid at all times.

**Titanium Retaining Bolts** – Lever and clamp retaining bolts are high grade titanium saving weight while remaining strong and durable.

## DELIVERY INCLUDES

**Each HC<sup>3</sup> master cylinder comes ready to install and delivery includes:**

- > 3 Way Lever Ratio (mimics  $\pm 1$ mm hydraulic ratio adjustment)
- > Banjo Connector with sealing rings
- > Remote Reservoir
- > Standard Clamp (without mirror mount)
- > Pre-Installed Switch (for brake or clutch activation)
- > ABE (German TÜV Approval) for d15 and d18 brake master
- > Manual and fitting instructions

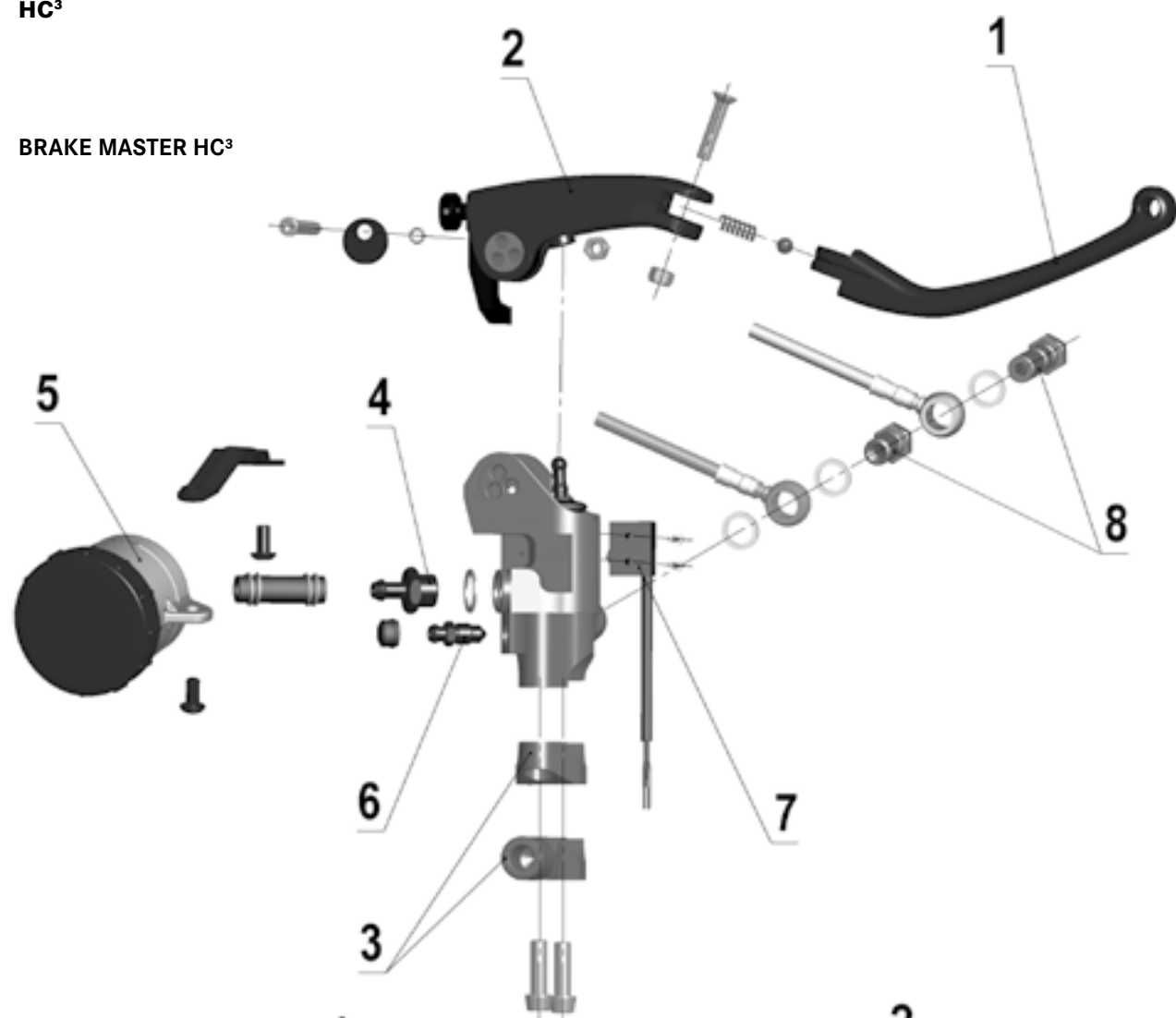
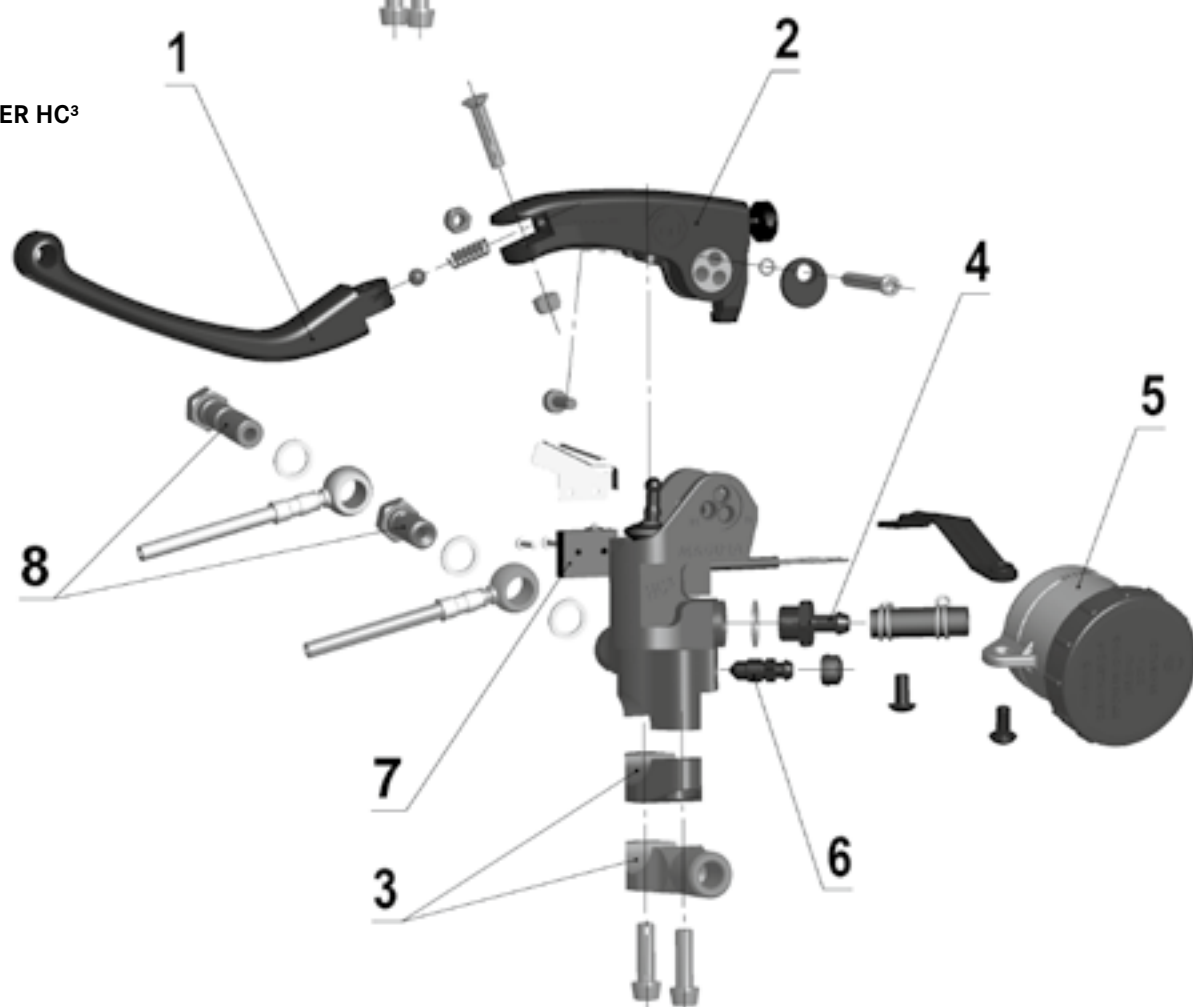
## OPTIONAL EXTRAS *(must be ordered separately)*

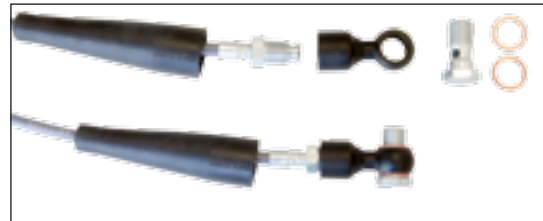
- > Short fold lever\*
- > Mirror mount clamp
- > Remote lever adjuster
- > Double banjo connector for 2 brake lines
- > Radial adapter for Hymec pressure line

\* Standard equipment on 12 mm HC<sup>3</sup> Brake Master for racing





**BRAKE MASTER HC<sup>3</sup>****CLUTCH MASTER HC<sup>3</sup>**



Adapter supplied without Pressure Line or Banjo Connector

**HC<sup>3</sup> | OPTIONAL AND SPARE PARTS**

POSITION	DESCRIPTION	ORDER CODE
1	Fold-Lever – Long Fold-Lever – Short <i>Includes retaining bolt, nut, spring and ball</i>	2700493 2700494
2	Lever Base – Brake Lever Base – Clutch <i>Includes reach adjust, bracket, piston activation rod, bellows and titanium lever securing bolt with self locking nut and o-ring</i>	2700496 2700495
3	Clamp Mirror Clamp <i>Includes 2 titanium clamp screws</i>	2700484 2700485
4	Reservoir Connector <i>Includes gasket washer</i>	2700486
5	Reservoir Radial HC Brake 36 ml Reservoir Radial HC Brake 9 ml Reservoir Radial HC Clutch 9 ml DOT Reservoir Radial HC Clutch 9 ml Mineral Oil <i>Includes hose, security hose clamp (x2), retaining bracket and bolts</i>	2700488 2700490 2700491 2700492
6	Bleed Nipple <i>Includes dust cover</i>	0720527
7	Switchkit Brake Switchkit Clutch <i>Includes retaining bolts</i>	0722213 2700487
8	Banjo Connector Doublebanjo Connector (for 2 brake lines) <i>Includes gasket washers</i>	0721786 0721789
9	Remote Brake Lever Adjuster	2700497
10	Radial Pressure Line Adapter <i>Suitable for brake and clutch applications Suitable for application with MAGURA HYMEC pressure lines</i>	2700499





### HC<sup>3</sup> | ABE RECOMMENDED FITMENT TABLE

MAKE/ MODEL	Ø 15 MM	Ø 18 MM	MAKE/ MODEL	Ø 15 MM	Ø 18 MM
<b>APRILIA</b> RSV4 Factory APRC ABS RSV4 R APRC ABS Tuono V4 R APRC ABS Dorsoduro 1200	X X	X X	<b>HUSQVARNA</b> Nuda 900R		X
<b>BIMOTA</b> DB9 Brivido S Tesi 3D DB11 DB5R/RE DB8 DB6 Delirio		X X X X X X	<b>KAWASAKI</b> Ninja ZX-10R Ninja ZX-6R Ninja ZX-6R 636 Z1000 /Special Z 1000 SX ZZR 1400 Z800	X	X X X X X X
<b>BMW</b> HP4 S 1000 RR S 1000 R HP2 Enduro HP2 Megamoto HP2 Sport R nineT K 1300 R K 1300 S K 1600 GT / Sport	X	X X X X X X X X X X	<b>KTM</b> 1190 RC8 R 1290 Superduke R 990 Superduke /R		X X X
<b>DUCATI</b> 1199 Panigale 1199 Panigale R 1199 Panigale S 1199 Superleggera Panigale 899 Multistrada 1200 / S Monster 1200 /S Diavel		X X X X X X X X	<b>MV AGUSTA</b> F3 675/800 Brutale 675 Rivale 800 F4 1000 /R /RR Brutale 1090 R / RR / Corsa		X X X X X
<b>HONDA</b> CB 1000 RR / SP CBR 600 RR VFR1200F		X X X	<b>SUZUKI</b> GSX-R 600 GSX-R 750 GSX-R 1000 Hayabusa 1300	X	X X X
<b>HOREX</b> VR6		X	<b>TRIUMPH</b> Daytona 675 / R Daytona 675 Street Triple / R Street Triple Speed Triple / R	X	X X X X
			<b>VYRUS</b> 984		X
			<b>YAMAHA</b> YZF-R6 YZF-R1 Vmax MT09	X	X X X